




# House and Land Package

## FROM \$738,000

**Jennian**  
HOMES



## 192 North Street, Timaru

 3	 2	 1	 2	 1
---	---	---	---	---

Jennian Homes present a sleek and stylish house and land package, situated in a central location close to the Timaru CBD. Boasting three double bedrooms with generous wardrobe space. Master bedroom with walk in robe, ensuite, and large inviting windows to embrace the daily sunshine hours. Separate laundry, walk-in pantry and quality Fisher & Paykel appliances included. Personalise this home to your liking with inclusive colour and joinery consultations. Enquire for more information today!

### Canterbury

212 Main South Road, Sockburn, Christchurch

P 03 741 1436

E [canterbury@jennian.co.nz](mailto:canterbury@jennian.co.nz)

[jennian.co.nz](http://jennian.co.nz)

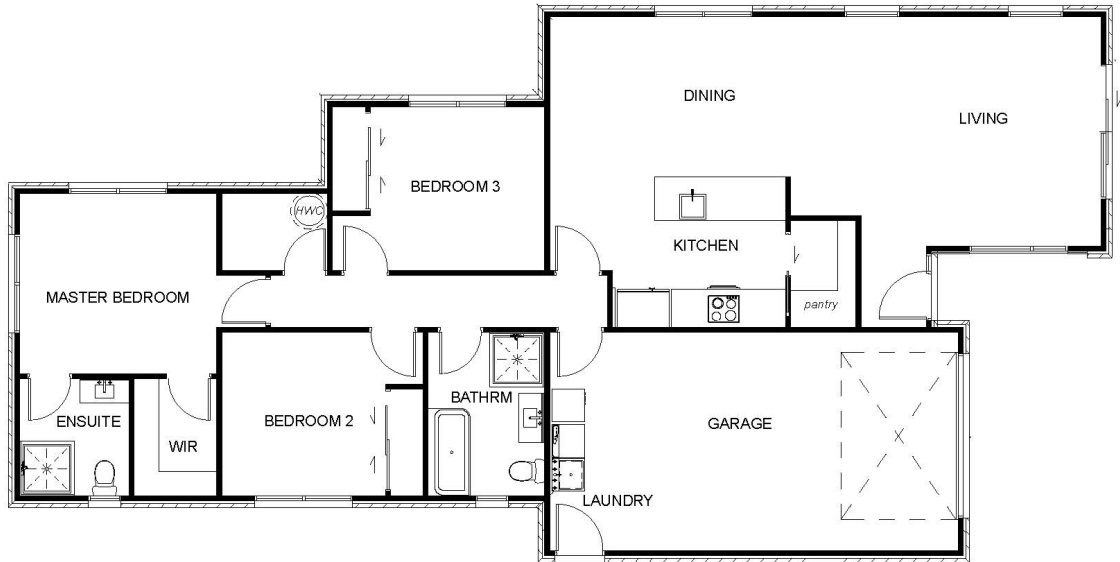
### Amanda Gormack

P 021 195 0346

E [amanda.gormack@jennian.co.nz](mailto:amanda.gormack@jennian.co.nz)

# 192 North Street, Timaru

155.80m<sup>2</sup> | 3 bdrm



Living Area	125.8 m <sup>2</sup>
Garage Area	30 m <sup>2</sup>
<b>Total Floor Area</b>	<b>155.8 m<sup>2</sup></b>
Home Width	10.6 m
Home Length	19 m
Land Area	560 m <sup>2</sup>

The images may show features which may not be included in the standard plan or price. Your local Jennian New Home Consultant will confirm standard features and discuss your ideas. All plans remain the copyright of Jennian Homes.